



ITALIAN YARN STUDIO
Borgo de' Pazzi

THE FREE FRIDAY PATTERN

Yarn: Clara by Borgo de' Pazzi Firenze

*His Harvest
Cardigan*



SKILL LEVEL:

Advanced Beginner

MATERIALS:

- YARN: **Clara by Borgo dè Pazzi Firenze**

Color Ⓐ (Green #247) 860 yds

Color Ⓑ (Gray #249) 660 yds

Color Ⓒ (Yellow #242) 50 yds

(the yardage showed above is for size L.)

- 5.5mm and 4.5mm hook

- Stitch marker

- Yarn needle

- Scissors

- Tape Measure

STITCHES & ABBREVIATIONS (US):

Chain Stitch - **CH**

Stitch - **ST**

Slip Stitch - **SL ST**

Single Crochet - **SC**

Double Crochet - **DC**

Front Post Treble Crochet - **FPtr**

Single Crochet 2 Stitches Together - **SC2TOG**

Double Crochet Back Loop Only - **DC-BLO**

Right Side - **RS**

Place Marker - **PM**

Skip - **SK**

Space - **SP**

Repeat - **REP**

Round - **RND**

Slip Knot - **SL KN**

CONSTRUCTION OF THE PATTERN:

A. Main Body Panels

B. Sleeves

C. Bottom Edging

D. Collar Panel

E. Straps

GAUGE:

13 dc x 8 rows (5.5mm hook) = 10x10 cm



SIZE GUIDE

	Shoulder Width	Chest Round	Length (Flat)
S	19"-20"	36"	23"
M	20"-21"	38"	25.5"
L	22"-23"	40"	27.5"
XL	24"-25"	42"	29.5"
2XL	25"-26"	44"	31"

- Sizes are only for suggestion. I provide measurement tips in the instructions to help to make the dress that fits everyone's unique body shape. If you find yourself not fitted in any size or in-between sizes, just follow those tips.

- If you're following the chart, you can find the matching color in the instructions for your size.

- When numbers of row/stitch count/times...etc. are showed only in color black, it means the number is the same for all sizes.

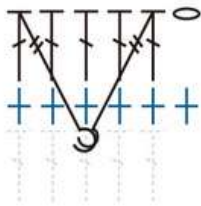
- The pictures show in the pattern is in size L

PATTERN STITCH:

Larksfoot Track ST: The Larksfoot Track Stitch is composed by 5 stitches; a DC+FPtr cluster ST, 3DC in the middle of each ST and finish with a FPtr+Dc cluster ST.

Written instructions:

Insert the hook in the next ST (appear to do a DC), yarn over and pull through the ST (3 loops on hook), yarn over and pull through 2 loops. Yarn over twice, insert the hook (from the front) in the 3rd DC (the middle of the 5) of two rows below (appear to do a FPtr), yarn over and pull through the post (5 loops on hook), yarn over and pull through 2 loop (4 loops on hook), yarn over and pull through 2 loop (3 loops on hook), yarn over and pull through all 3 loops on the hook.



1DC in the next 3 ST. Yarn over twice, insert the hook in the same post, yarn over and pull through the post (4 loops on hook), yarn over and pull through 2 loops (3 loops on hook), yarn over and pull through 2 loops (2 loops on hook). Yarn over, insert the hook in next ST, yarn over and pull through 2 loops (3 loops on hook), yarn over and pull through all 3 loops on the hook.

*Check this Youtube tutorial from The Crochet Crowd for more informations about **Larksfoot Track ST**. <https://youtu.be/rT8tnFqW6n8>



Alternative DC Turning CH:

Pull up a loop in the first ST of the row. Yarn over and pull through both loops on the hook. (You have just made a SC stitch.) Insert your hook into the front left vertical bar of the stitch (see picture 1 ↓) and yarn over, pull up a loop (2 loops on hook). Yarn over and pull through both loops.



*I strongly recommend to do the alternative DC turning CH instead of the traditional CH3 for all the DC turning point in this project. As we will be working most of the time RS facing us, the turning CH will appear all at the same side. It will affect the outcome greatly with the traditional CH3 turning method.



INSTRUCTIONS:

Main Body Panel (make 2).

CH up (150,156,162,168,174) + 1

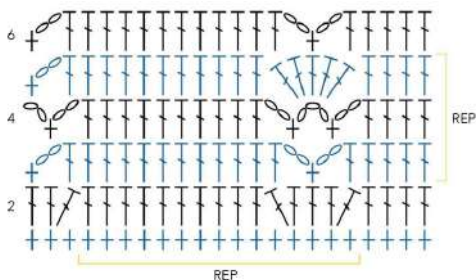
*Or make the CH in measured for your desire length from the front to the back (across the shoulder) minus 4" (10 cm). CH number in multiple of 6 + 1 (as the first turning CH).

For example my measurement from the front to the back is 55" (140cm), so I should make a CH in length of 51" (130cm).

Row 1 (withColor @): SC in each CH across. Turn.[150,156,162,168,174]

Row 2: 1DC in the next (5,8,11,14,17) ST. *SK the next ST, 2DC in the next ST, 1DC in the next ST, 2DC in the next ST, SK the next ST, 1DC in the next 10 ST. * REP from * other 8 times. SK the next ST, 2DC in the next ST, 1DC in the next ST, 2DC in the next ST, SK the next ST. 1DC in the next (5,8,11,14,17) ST.

CH1, cut the yarn and fasten off. Turn. [150,156,162,168,174]



Row 3 (with Color @):

Attach the yarn in the last ST of the previous row. 1DC in the next (5,8,11,14,17) ST. *1DC in the next ST, CH2, SK the next ST, 1SC in the next ST, CH2, SK the next ST, 1DC in the next ST. 1DC in the next 10 ST. *REP from* other 8 times. 1DC in the next ST, CH2, SK the next ST, 1SC in the next ST, CH2, SK the next ST, 1DC in the next ST. 1DC in the next 11 ST. CH1, cut the yarn and fasten off. [150,156,162,168,174]

*DO NOT TURN YOUR WORK after row3, this will be the RS of your work.

*Starting from row 3, you will have to alternate the color for each rows.

Row 4 (with Color @):

Keep the work RS facing you. Attach the yarn back to the first ST of the previous row. 1DC in the next (5,8,11,14,17) ST. *CH2, SK the next ST, SC in the CH2 SP, CH3, SC in the next CH2 SP, CH2, SK the next ST, 1DC in the next 10 ST. * REP from * other 8 times. CH2, SK the next ST, SC in the CH2 SP, CH3, SC in the next CH2 SP, CH2, SK the next ST. 1DC in the next (5,8,11,14,17) ST.

CH1, cut the yarn and fasten off. [150,156,162,168,174]



Row 5 (withColor (b)):

Keep the work RS facing you. Attach the yarn back to the first ST of the previous row. 1DC in the next (5,8,11,14,17) ST. *SK the CH2 SP, 5DC in the CH3 SP, SK the CH2 SP, 1DC in the next 10 ST. * REP from * other 8 times. SK the CH2 SP, 5DC in the CH3 SP, SK the CH2 SP, 1DC in the next (5,8,11,14,17) ST.
CH1,cut the yarn and fasten off. [150,156,162,168,174]

Row 6 to Row (20,23,23,26,26): REP from row 3 to row 5. [150,156,162,168,174]

Row (21,24,24,27,27) to Row (26,29,29,32,32): PM at the (75,78,81,84,87)th ST.

For the Left Panel: Continue REP the pattern from row 3 to row 5, but stop row at the marked ST.

For the Right Panel: Attach the yarn in the ST after the marked ST and continue REP the pattern from row 3 to row 5.

*DO NOT CUT THE YARN (do not change the color) after row (26,29,29,32,32).

Row (27,30,30,33,33): CH1,turn your work. 1SC in each ST across. [75,78,81,84,87]

*REP above steps to have 2 identical panels.

*DO NOT CUT THE YARN after the last ST of the second panel.

Connect the Panels: Place the 2 panels RS against each other. SC in the front loop of the 1st ST on the panel which is closer to you and the back loop of the 1st ST on the panel which is further from you (see picture 4 ↓). Continue to put SC all the way down to connect the 2 panels. CH1, fasten up.

*The RS of your work should look like picture 5 and 6 ↑. I used a different color to connect the 2 panels in the pictures just for the purpose of clearer demonstration.



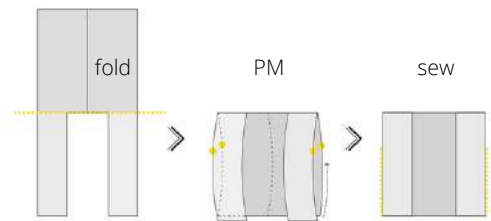
* The RS of your work should look like picture 5 and 6 ↑. I used a different color to connect the 2 panels in the pictures just for the purpose of clearer demonstration.

Close Up the Sides for sleeve holes : Flip your work inside-out and fold it in half. PM at the (32,35,38,41,44)th ST on both the front and back side counting from bottom. (see diagram ↓).

Use "Mattress sewing" technique to close up the opening until the ST marker. (Do not sew the marked ST.)



*Mattress Sewing: Insert the needle always from the inside and pull it out, on both the right and the left part.



Sleeves

Round 1 (with Color ⑥):

Place the work RS facing you. Attach the yarn in the marked ST, 1DC in the next 3 ST, *1DC in the next ST, CH2, SK the next ST, 1SC in the next ST, CH2, SK the next ST, 1DC in the next ST. 1DC in the next 10 ST. *REP from* other 4 times. 1DC in the next ST, CH2, SK the next ST, 1SC in the next ST, CH2, SK the next ST, 1DC in the next ST. 1DC in the next 3 ST. SL ST in the first ST. CH1, cut the yarn and fasten off. [86]

Rnd 2 (with Color ⑤):

1DC in the next 3 ST. *CH2, SK the next ST, SC in the CH2 SP, CH3, SC in the next CH2 SP, CH2, SK the next ST, 1DC in the next 10 ST. * REP from * other 4 times. CH2, SK the next ST, SC in the CH2 SP, CH3, SC in the next CH2 SP, CH2, SK the next ST. 1DC in the next 3 ST. SL ST in the first ST. CH1, cut the yarn and fasten off. [86]

Rnd 3 (with Color ⑥):

1DC in the next 3 ST. *SK the CH2 SP, 5DC in the CH3 SP, SK the CH2 SP, 1DC in the next 10 ST. * REP from * other 4 times. SK the CH2 SP, 5DC in the CH3 SP, SK the CH2 SP, 1DC in the next 3 ST. SL ST in the first ST. CH1, cut the yarn and fasten off. [86]

Rnd 4 (with Color ⑤):

1SC in the first ST, CH1, SK the next ST, *1SC in the next ST, CH1, SK the next ST *REP from * to the end. SL ST in the first ST. CH1, cut the yarn and fasten off. [86]

Rnd 5 (with Color ⑥):

*1DC in the SC ST, 1DC in the CH1 SP. *REP from * to the end. SL ST in the first ST. CH1, cut the yarn and fasten off. [86]

*REP for the other sleeve.

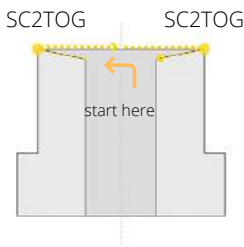


Bottom Edging.

Row 1 (with Color ②): Attach the yarn in the corner showed in the diagram ↓.

Put 1SC in each SC row and 2 SC in each DC row. When arrive in the 2 corners showed in the same diagram ↓, put 1SC2TOG in the 2 ST on both sides of the sewing line (see picture 7 ↓). Continue to put SC across to the end. CH1, cut the yarn and fasten off. [184, 208, 208, 232, 232]

* I used this SC row to wrap up my yarn tails as much as possible to save me some time at the end. However it is just my personal preference, you can do whatever you feel comfortable with.



Row 2 (with Color ③): Keep the work RS facing you. Attach the yarn back to the first ST of the previous row. 1SC in the next (4, 1, 1, 3, 3) ST, *1SC in the next ST, CH4, SK4 ST*, REP from * until there is (5, 2, 2, 4, 4) ST left, 1SC in all the remaining ST. CH1, cut the yarn and fasten off. [184, 208, 208, 232, 232]

Row 3 (with Color ④): Attach the yarn back to the first ST of the previous row. (4, 1, 1, 3, 3) DC to the next ST. *SK the SC ST, put 5DC in the CH4 SP* REP from * to all the CH4 SP. SK the next SC ST, 1DC to each of the remaining (4, 1, 1, 3, 3) ST. CH1, cut the yarn and fasten off. [184, 208, 208, 232, 232]

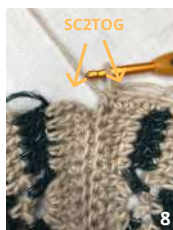
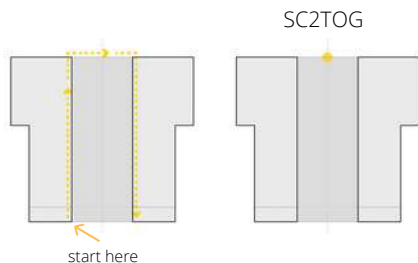
Row 4 and Row 5: REP Row 2 and Row 3. DO NOT CUT THE YARN after row 5.

Row 6: Turn your work. 1SC in each ST across. CH1, cut the yarn and fasten off. [184, 208, 208, 232, 232]



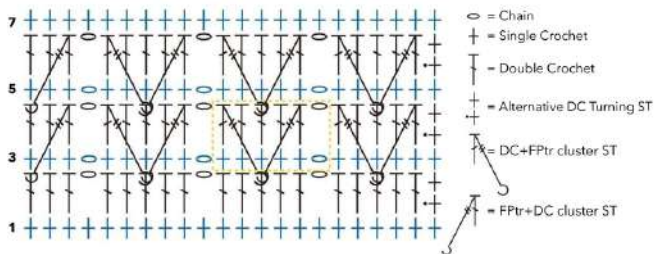
Collar Panel

Row 1 (with Color **ⓑ** or whichever Color you've used for the last DC row of the main body panel) : Keep the work RS facing you. Attach the yarn in the corner showed in the diagram ↓ , put 1SC in each of the SC rows and 2SC in each of the DC rows in the bottom edge part. 1SC on top of each DC ST in the main body panel. In the horizontal part, 2SC in each of the DC rows. When arrive in the middle of the piece, put 1SC2TOG in the 2 ST on both sides of the connecting line (see picture 8 ↓). Continue to put SC in the other side so that both sides matches. CH1, cut the yarn and fasten off. [150,199, 205, 211, 217]



Row 2 (with Color **ⓐ** or Color **ⓑ** if you have Color **ⓐ** for your last row) : Keep the work RS facing you. Attach the yarn back to the first ST of the previous row. 1DC-BLO in the next 6 ST. *CH1, SK the next ST, 1DC-BLO in the next 5 ST.* REP from * until there are 7 ST left. CH1 and SK the next ST, 1DC-BLO in the remaining 6 ST. Turn. [150, 199, 205, 211, 217]

Row 3: CH1 (doesn't count as a ST), put 1SC in the next 6 ST. * CH1, 1SC in the next 5 ST * REP from * until there are 7 ST left. CH1 and SK the next ST, 1SC in the remaining 6 ST. Turn. [150,199, 205, 211, 217]



Row 4: 1DC in the first ST, 1 Larksfoot Track ST in the next 5ST. * CH1, 1 Larksfoot Track ST in the next 5ST. * REP from * until there are 7 ST left. CH1 and SK the next ST, 1 Larksfoot Track ST in the next 5ST, 1DC in the last ST. Turn.
[150, 199, 205, 211, 217]

Row 5 and Row 6: REP row 3 and row 4.

Row 7: CH1 (doesn't count as a ST), 1SC across each ST to the end. CH1, cut the yarn and fasten off. [150, 199, 205, 211, 217]

Straps (with 4.5 mm hook)

Pull out a piece of yarn from your skien, leave about 40" for the tail and tie a SL KN.

Determine the height for your straps and find the DC ST in the 4th row of the collar panel in the same height. Insert the hook in the 2 back loop of that DC ST from the wrong side of the panel. (see picture 9 ↓) Place the SL KN on the hook and pull through both loops (see picture 10, 11 and 12 ↓).

* I made my straps in 10.5" height from the bottom.

Now we are going to make a SL ST cord. * Wrap your hook with your tail yarn from the front to the back and put it behind the hook (see picture 13 ↓), yarn over with your working yarn and pull through both loops on the hook (see picture 14 ↓).

* REP from * 60 times (or until reaching your desire length). CH1, cut the yarn and fasten off. [60]



REP the steps for the other side.

Weave in all the ends, and use the proper blocking method according to your fiber materials.



Thank YOU

Thank you so much for joining us in the making of this cardigan. As you may realized already, the outline of this design was inspired by the traditional Japanese outerwear, Haori. As the peaceful mind is highly appreciated in the culture, I hope this cardigan will bring the same to whoever is wearing it.

A special thank to Borgo de' Pazzi for their beautiful creation Clara. This design wouldn't be accomplished without the unique shades and the texture of this yarn as well as their sincere supports for the stitch crafts.

Please feel free to contact me via email or DM me on Instagram if you have any questions about the pattern. I will do my best to assist you! Also please tag me @jess_rootknots and use the #corallinebikini in your photos on Instagram. So that I'll never miss your work!

Hugs,

Jessica T.



jess_rootknots



jess.rootknots@gmail.com

