



# THE FREE FRIDAY PATTERN

YARN: TWEED BY BORGO DE' PAZZI

## Ingrid COWL

by Esther Lara, @nosolopunto

*The Ingrid cowl is a garment especially suitable for people who need to warm their neck but do not like wearing something too thick. It has been knitted with worsted/DK yarn and you can finish it in a couple of days more or less. It is perfect as a gift. The one on the cover photo has been made with Borgo de Pazzi's Tweed yarn (color 103), whose composition is 50% wool, 35% polyamide and 15% silk. For this pattern it is advisable to use a yarn that meets two conditions: that it does not have too much hair to highlight the cables and that does not make color variations because there would be too much decoration and the cables would fade. The pattern offers you two possibilities: you can knit the cowl in the round or flat adding a flap with buttons so you will not have to go through your head to wear it. I hope you like my design and enjoy knitting it as much as I did. If so, I would love you to share it on social media by tagging me as @nosolopunto and/or typing the hashtag #cuelloingrid or #ingridcowl; @borgodepazzi, #borgodepazzitweed, #italianyarnstudio for the yarn. I thank you for buying my pattern and wanting to share it. If you have any problems, do not hesitate in contact me via my email nosolopunto@gmail.com. I will get back to you as soon as possible.*

@nosolopunto

**Ingrid Cowl. Share your progress in social media with hashtags #cuelloingrid or #ingridcowl #colloingrid**

#### **MATERIALS:**

- YARN: 180/200 gr of **TWEED** BY Borgo de Pazzi Firenze
- Circular needles in two sizes. I used 3.5 mm (US 4) and 4.5 mm (US 7) needles - Cable needle (optional) - Tapestry needle - Markers - Buttons (optional)

#### **STITCHES & ABBREVIATIONS:**

- Knit
- Purl
- Cables
- Twisted ribbing (optional)
- Picking up stitches (buttoned version only)

k - knit

P - purl

SM - slip marker

cn - cable needle

BOR - Beginning of row -

2/2LC - sl 2st onto cn, hold in front, k2, k2 from cn

2/2RC - sl 2st onto cn, hold in back, k2, k2 from cn

1/2RPC - sl 1st onto cn, hold in back, k2, p1 from cn

2/1LPC - sl 2st onto cn, hold in front, P1, K2 from cn

#### **GAUGE:**

10 cm x 10 cm, 4" x 4" = 19 stitches x 25 rows in stockinette, using larger needles.



#### Chart symbols:



knit



purl



2/2LC – sl 2st onto cn, hold in front, k2, k2 from cn



2/2LC – sl 2st onto cn, hold in front, k2, k2 from cn



1/2RPC – sl 1st onto cn, hold in back, k2, p1 from cn



2/1LPC – sl 2st onto cn, hold in front, p1, k2 from cn



No stitch



#### INSTRUCTIONS:

##### Making the cowl in the round, seamless:

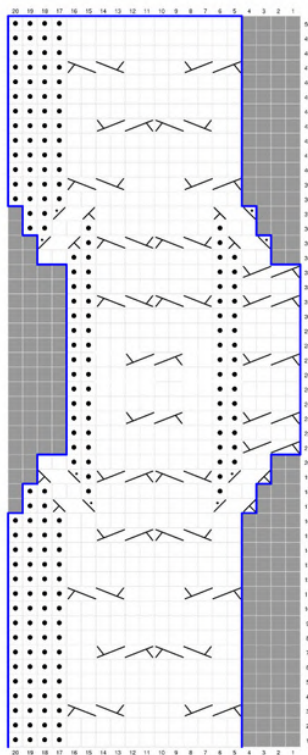
On the smaller needle, cast on 128 st (I used the German twisted cast on), place a BOR marker and work in the round in 2 x 2 twisted ribbing for 10 rounds. You can also make a common ribbing, without twisting stitches if you wish. Then, switch to larger needles and work the chart by repeating the motif 8 times on each round (you have the legend below). You can place markers between motifs if you need it. When you are done knitting the graphic, switch back to the smaller needle, work 10 rounds of 2 x 2 twisted ribbing, and bind off stretchy. In this video I show you how I made it:

[CÓMO CERRAR UNA LABOR DE MANERA ELÁSTICA - YouTube](#)



## Circular - Chart

Work the stitches included in the blue lines



- Rounds 1 and 2: k12, p4
- Round 3: 2/2RC, k4, 2/2LC, p4
- Rounds 4, 5 and 6: k12, p4
- Round 7: k2, 2/2LC, 2/2RC, k2, p4
- Rounds 8, 9 and 10: k12, p4
- Round 11: 2/2RC, k4, 2/2LC, p4
- Rounds 12, 13 and 14: k12, p4
- Round 15: K2, 2/2LC, 2/2RC, k2, p4
- Round 16: k12, p4
- Round 17: 1/2RPC, k8, 2/1LPC, p2
- Round 18: k2, p1, k8, p1, k2, p2
- Round 19: 1/2RPC, 1pr, 2/2LC, 2/2RC, p1, 2/1LPC
- Round 20: k2, p2, k8, p2, k2
- Round 21: 2/2RC, p2, k8, p2
- Round 22: k4, p2, k8, p2
- Round 23: 2/2RC, p2, k2, 2/2RC, k2, p2
- Rounds 24, 25 and 26: k4, p2, k8, p2
- Round 27: 2/2RC, p2, k2, 2/2RC, k2, p2
- Rounds 28, 29 and 30: k4, p2, k8, p2
- Round 31: 2/2RC, p2, 2/2LC, 2/2LC, p2
- Round 32: k4, p2, k8, p2
- Round 33: 2/2RC, p2, k8, p2
- Round 34: k2, p2, k8, p2, k2
- Round 35: 2/1LPC, p1, 2/2LC, 2/2LC, p1, 2/1LPC
- Round 36: k2, p1, k8, p1, k2, p2
- Round 37: 2/1LPC, k8, 2/1LPC, p2
- Round 38: k12, p4
- Round 39: 2/2RC, k4, 2/2LC, p4
- Rounds 40, 41 and 42: k12, p4
- Round 43: k2, 2/2LC, 2/2RC, k2, p4
- Rounds 44, 45 and 46: k12, p4
- Round 47: 2/2RC, k4, 2/2LC, p4
- Rounds 48, 49 and 50: k12, p4

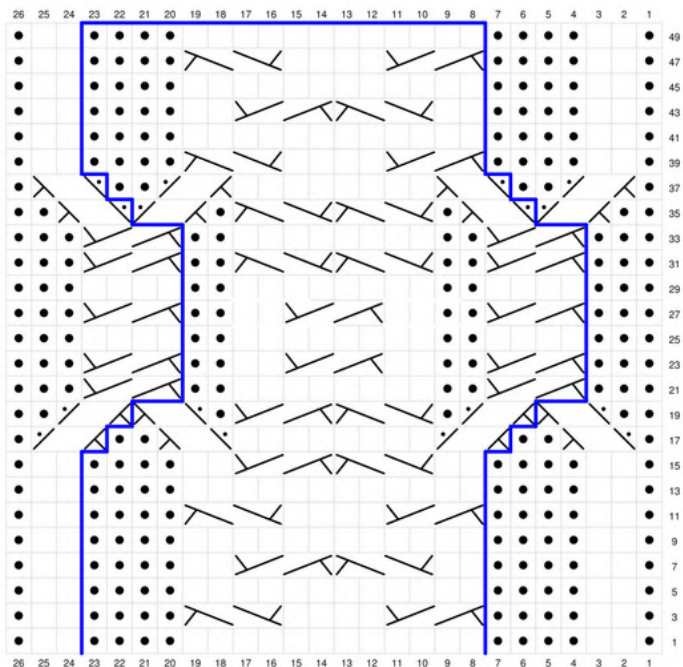


## Making the cowl with vertical opening with buttons (knitted flat)

### Flat - Chart

This time, the cowl making is somewhat different from the previous version. On the smaller needle, cast on 122 stitches (I used the German twisted cast on) and work in 2 x 2 twisting ribbing for 10 rows. You can also knit the ribbing without twisting if you wish. Since the cowl is flat knitting, you should remember that on the "wrong side" you will have to twist the purls.

Then, switch to larger needles and work the chart (you have the legend below). In this case, you must start the first part of the chart to the blue line, repeat the pattern between lines up to 7 times and finish the final part of the chart. I explain it better in the legend.



- Row 1: p1, k2, p4, \*k12, p4\*, repeat from \* to \* 6 times more (7 times in total), k2, p1
- Even rows: work as you see
- Row 3: p1, k2, p4, \*2/2RC, k4, 2/2LC, p4\*, repeat from \* to \* 6 times more (7 times in total), k2, p1
- Row 5: work as you see
- Row 7: p1, k2, p4, \*k2, 2/2LC, 2/2RC, k2, p4\*, repeat from \* to \* 6 times more (7 times in total), k2, p1
- Rows 8, 9 and 10: work as you see
- Row 11: p1, k2, p4, \* 2/2RC, k4, 2/2LC, p4\*, repeat from \* to \* 6 times more (7 times in total), k2, p1
- Rows 12, 13 and 14: work as you see
- Row 15: p1, k2, p4, \*k2, 2/2LC, 2/2RC, k2, p4\*, repeat from \* to \* 6 times more (7 times in total), k2, p1
- Row 16: work as you see
- Row 17: p1, 2/1LPC, p2, \*1/2RPC, k8, 2/1LPC, p2\*, repeats from \* to \* 6 times more (7 times in total), 1/2RPC, p1
- Row 18: work as you see
- Row 19: p2, 2/1LPC, \*1/2RPC, p1, 2/2LC, 2/2RC, p1, 2/1LPC\*, repeat from \* to \* 6 times more (7 times in total), 1/2RPC, p2
- Row 20: work as you see - Row 21: p3, \*2/2RC, p2, k8, p2\*, repeat from \* to \* 6 times more (7 times in total), 2/2RC, p3
- Row 22: work as you see
- Row 23: p3, \*2/2RC, p2, k2, 2/2RC, k2, p2\*, repeat from \* to \* 6 times more (7 times in total), 2/2RC, p3
- Rows 24, 25 and 26: work as you see
- Row 27: p3, \*2/2RC, p2, k2, 2/2RC, k2, p2\*, repeat from \* to \* 6 times more (7 times in total), 2/2RC, p3
- Rows 28, 29 and 30: work as you see
- Row 31: p3, \*2/2RC, p2, 2/2LC, 2/2LC, p2\*, repeat from \* to \* 6 times more (7 times in total), 2/2RC, p3
- Row 32: work as you see
- Row 33: p3, \*2/2RC, p2, k8, p2\*, repeat from \* to \* 6 times more (7 times in total), 2/2RC, p3
- Row 34: work as you see - Row 35: p2, 2/1LPC, \*1/2RPC, p1, 2/2LC, 2/2LC, p1, 2/1RPC\*, repeat from \* to \* 6 times more (7 times in total), 1/2RPC, p2
- Row 36: work as you see
- Row 37: p1, 1/2RPC, p2, \*2/1LPC, k8, 1/2RPC, p2\*, repeats from \* to \* 6 times more (7 times in total), 2/1LPC, p1
- Row 38: work as you see
- Row 39: p1, k2, p4, \*2/2RC, k4, 2/2LC, p4\*, repeat from \* to \* 6 times more (7 times in total), k2, p1
- Rows 40, 41 and 42: work as you see
- Row 43: pr, k2, p4, \*k2, 2/2LC, 2/2RC, k2, r4\*, repeats from \* to \* 6 times more (7 times in total), k2, p1
- Rows 44, 45 and 46: work as you see
- Row 47: p1, k2, p4, \*2/2RC, k4, 2/2LC, p4\*, repeat from \* to \* 6 times more (7 times in total), k2, p1
- Rows 48, 49 and 50: work as you see



When you are done row 50, switch back to smaller needles and repeat the ribbing you made below and bind off stretchy. I remind you of the link to the video I put in earlier:

[CÓMO CERRAR UNA LABOR DE MANERA ELÁSTICA - YouTube](#)



Now it is time to pick up the stitches on the edges. Keep in mind that it must be an even number of points. I have had 44 stitches, worked in 2 x 2 ribbing for 10 rows, and binded off. Make sure the two sides have the same number of stitches. On one side, you will have to make the buttonholes. To do this, you will have to work 2 stitches together and make a yarn over to knit it on the following row. I put 3 buttonholes on row 5 of the ribbing at stitches 5, 21 and 39. Then I continued working until row 10 and closed.

*Finish, block, sew the buttons and you will have got your Ingrid Cowl ready! If you like my pattern, I'd love for you to share your progress on social media by tagging me as @nosolopunto and/or with #cuelloingrid or #ingridcowl Please respect the work of designers and do not illegally share our work.*

